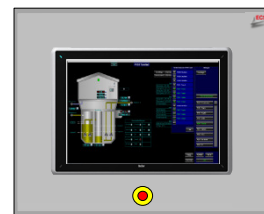


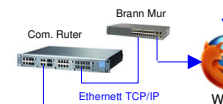


ECS - EL. Kontrollsystem for komplett avlusingslinje. (5 x pumper)

ECS – Control panel på Bru



Opsjon



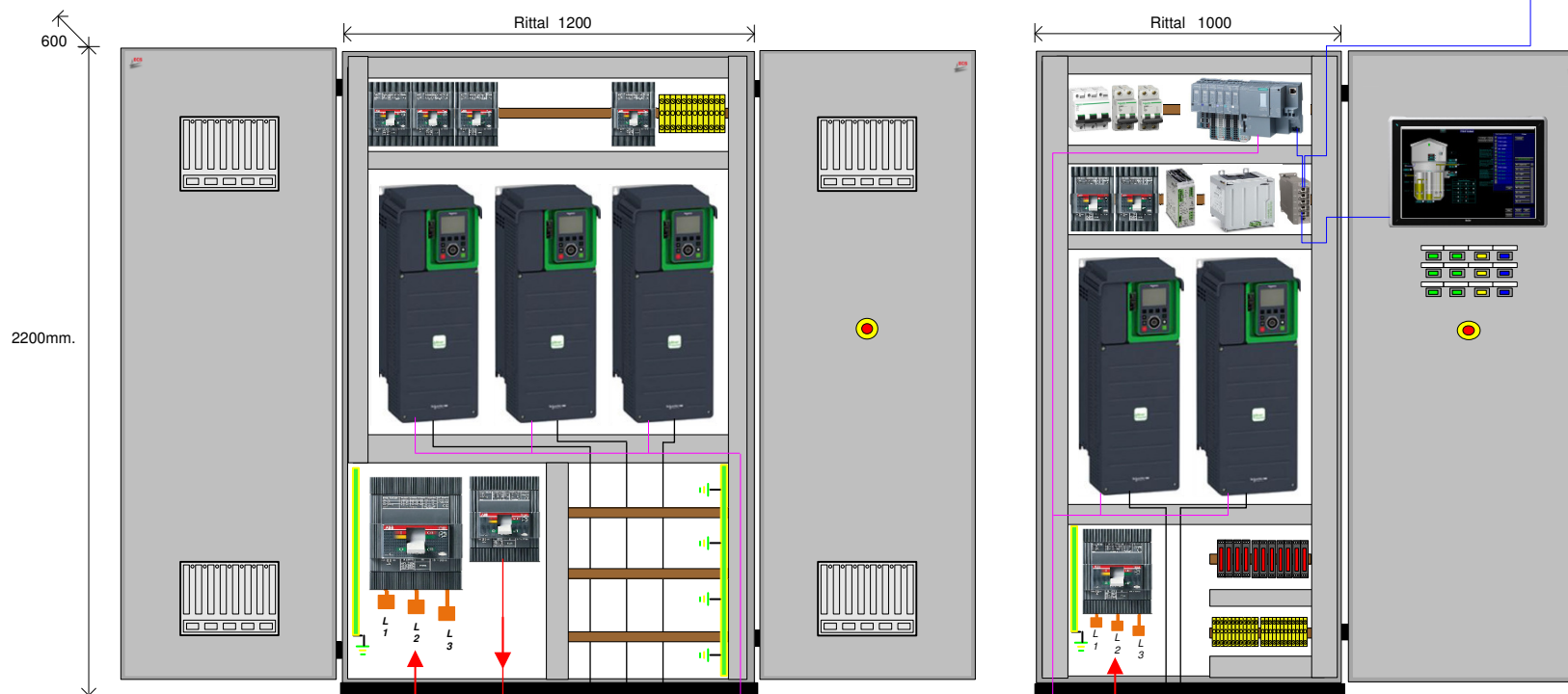
Opsjon

Teknisk Support
Sirevåg Mekaniske AS
ECS Automation AS

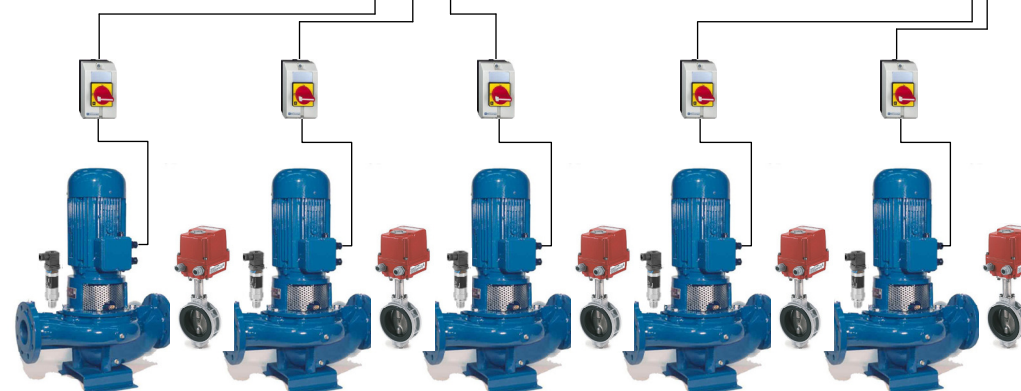


Starter Cabinet +V2.

Control Cabinet +V1.



Power in: 280kw - 630A - 400V - 50HZ



5 x 55kW – Soft Fiskepumpe 99A - 400V - 50HZ

Trådløs Fjernstyring Pumper



Opsjon

Revidering / Dato: 04.01.2017. Versjon 1. Kontrollsystem Layout

Revidering / Dato:

Revidering / Dato:

Revidering / Dato:



Industri vegen 2.
Postboks 508
4349 Bryne
Tlf. 51 77 09 70
Fax. 51 77 09 71
www.ecs.as

Leverandør: **ECS Automation AS**

Customer: Sirevåg Mekaniske AS
Project: Kontrollsystem – Soft Fiskepumpe.

Tegnet av: Arvid Salte

Filnavn:
Komplett avlusingslinje _ 5 x Pumper.vsd

Dato: 06.01.2017

Side: 1 av 1