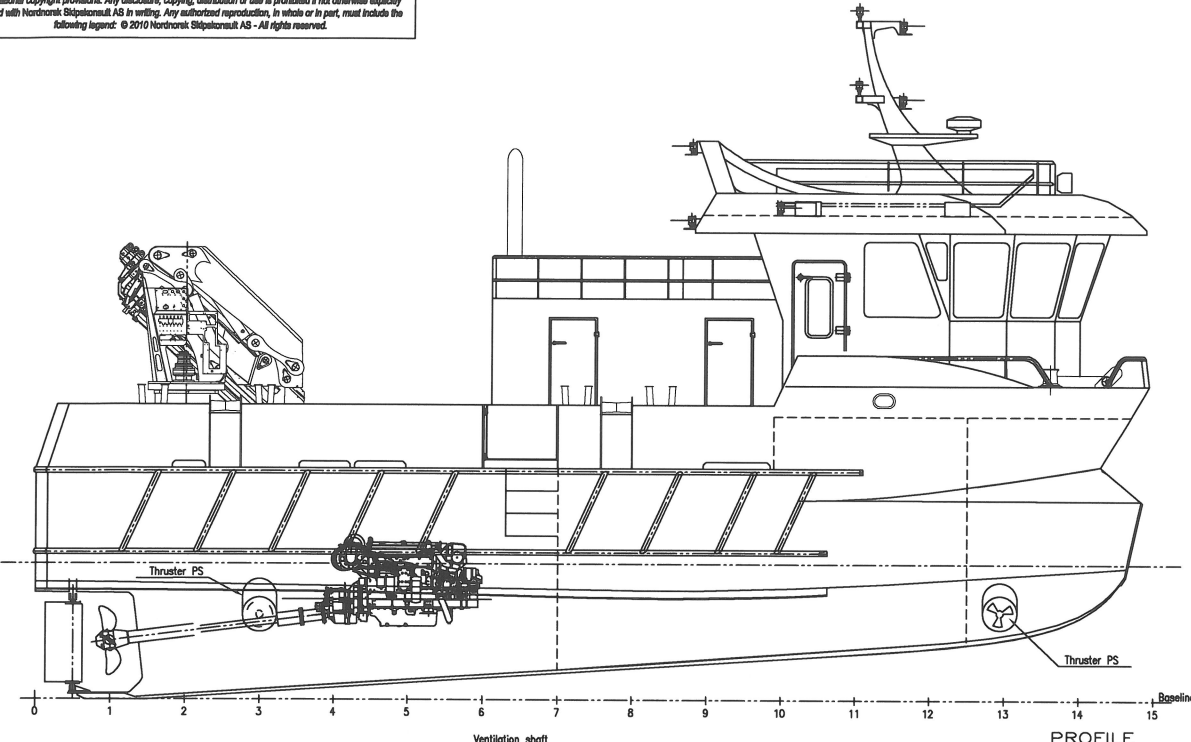
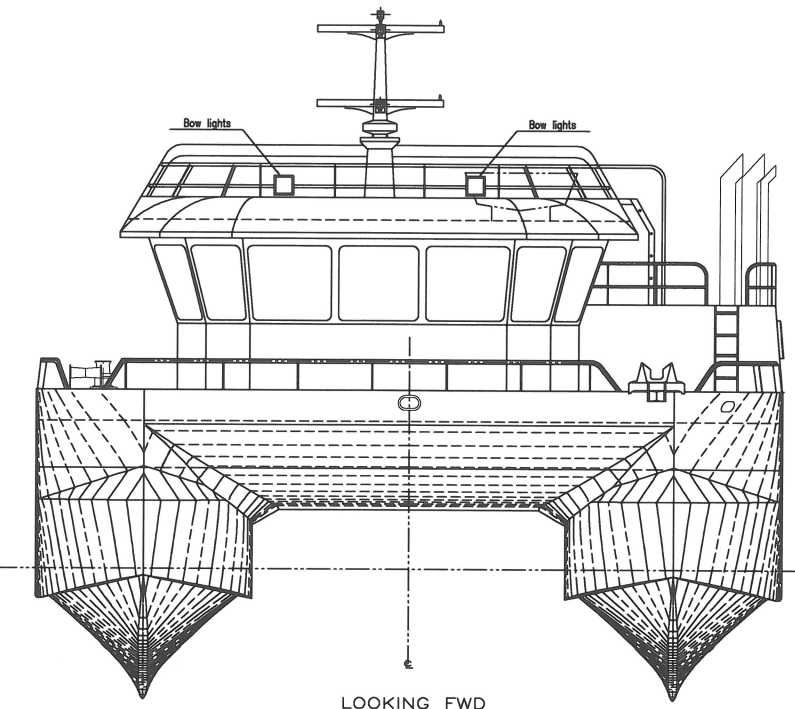


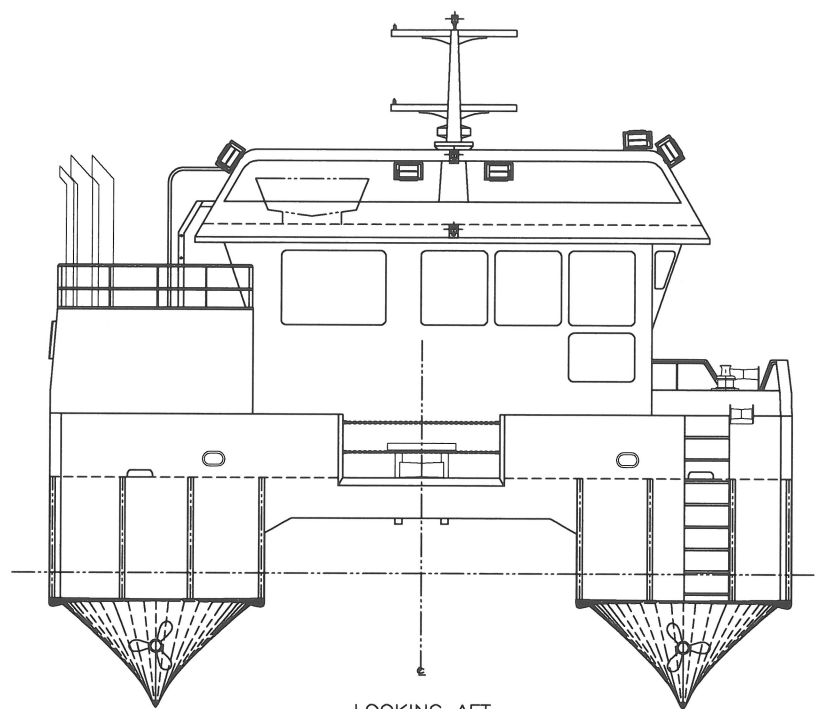
Nordtrank Skipsrepar AS PROPRIETARY. This document and its accompanying elements, contain technical data, drawings and images, which is proprietary and confidential, and protected under applicable Norwegian laws and international copyright provisions. Any disclosure, copying, distribution or use is prohibited if not otherwise explicitly agreed with Nordtrank Skipsrepar AS in writing. Any authorized reproduction, in whole or in part, must include the following legend: © 2010 Nordtrank Skipsrepar AS - All rights reserved.



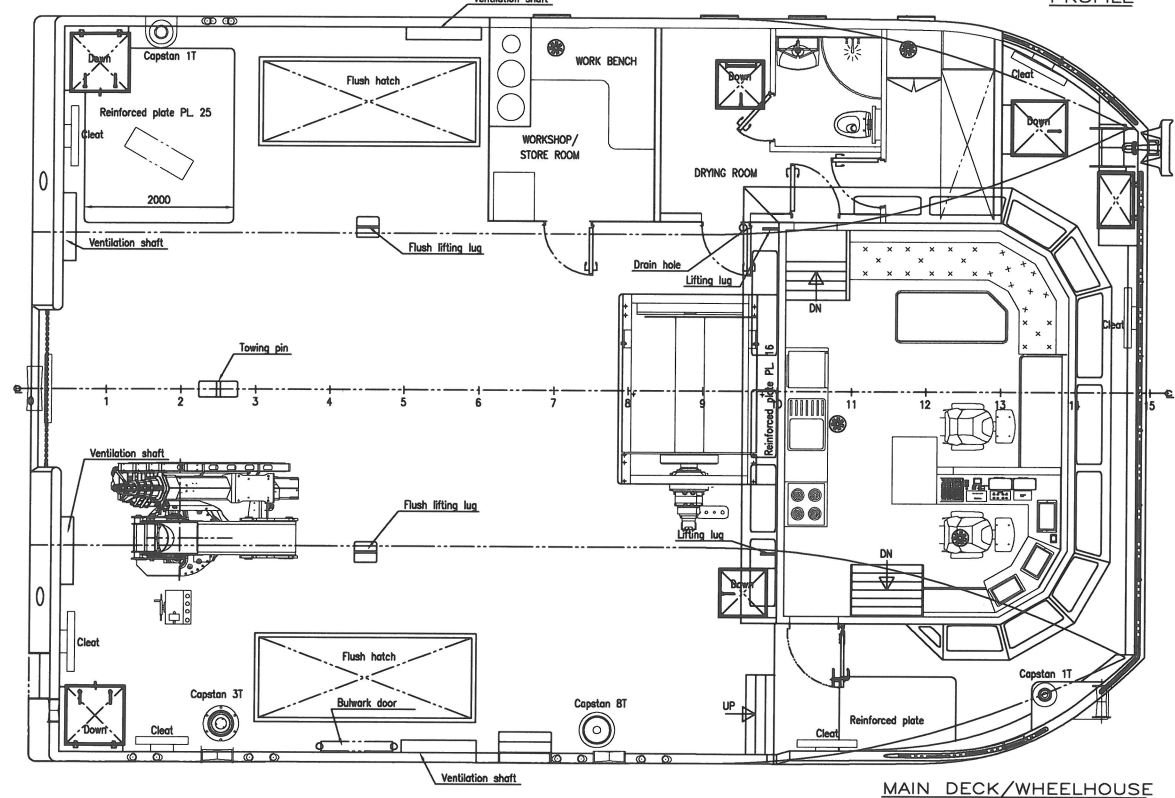
PROFILE



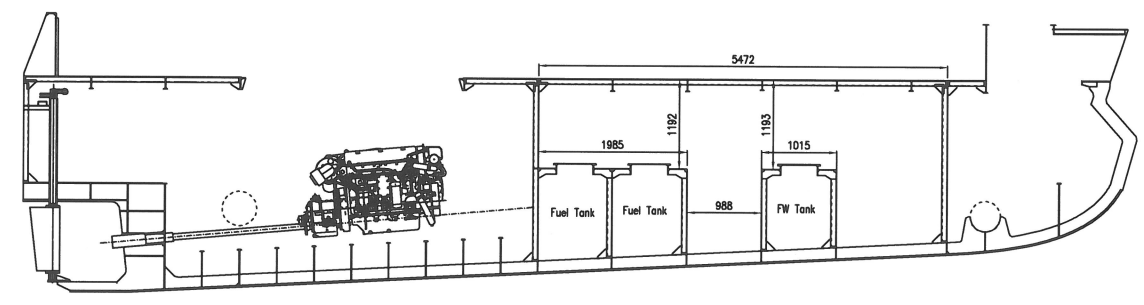
LOOKING FWD



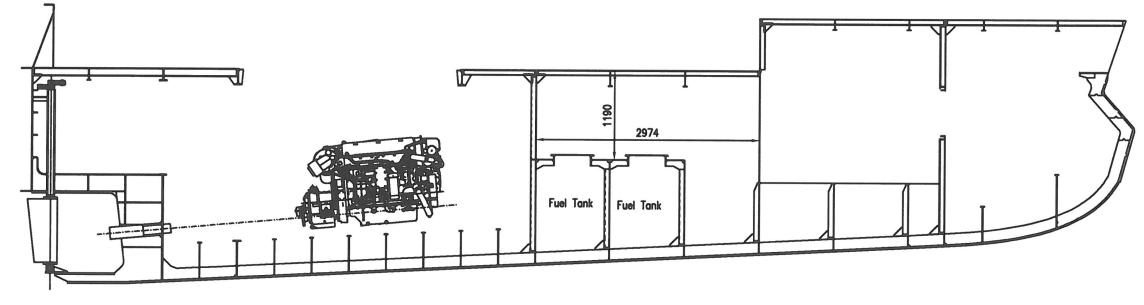
LOOKING AFT



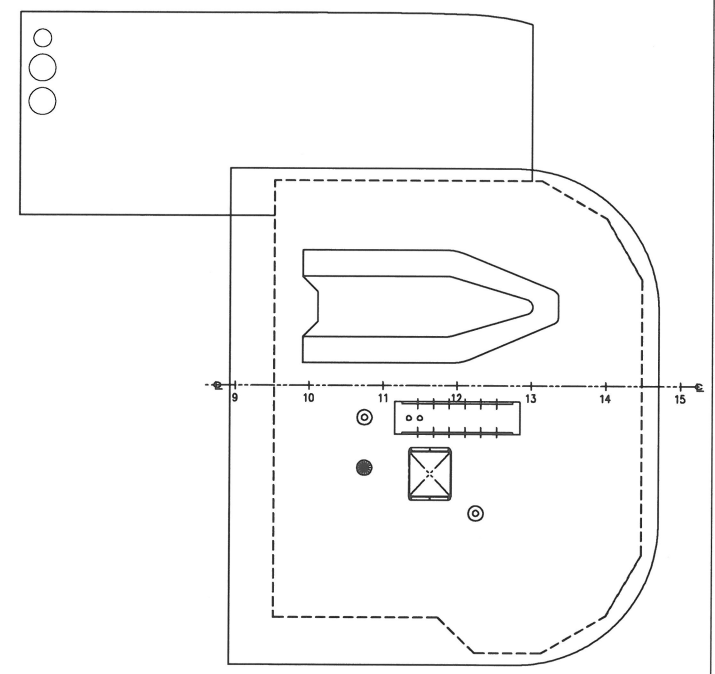
MAIN DECK/WHEELHOUSE



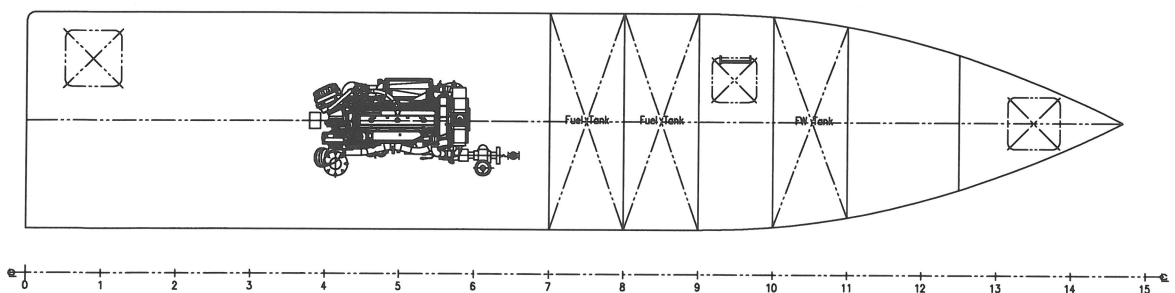
SECTION 3550 FCL PS



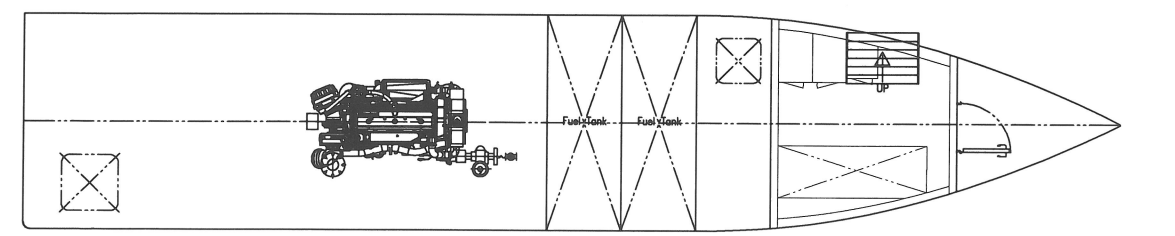
SECTION 3550 FCL SB



WHEELHOUSE ROOF



BELOW MAIN DECK



MAIN DIMENSIONS:
 LENGTH OVER ALL: 14.98 m
 MOULDED BREADTH: 10.00 m
 MOULDED DEPTH: 2.727 m

NOTES:
 BASED ON DRAWING "BH1317-100-01" MOEN MARIN AS

Rev.	Description:	Date:	Constr./Drawn:	Contr.:	Date/Sign:
03.04.2017		22.12.2016	JD	MH	
NSK Ship Design		Scale:		Approved:	
Approved:		1:50 (A1)		JAH	
GORM - LG 8633					
GENERAL ARRANGEMENT					
Reference:					
NSK SHIP DESIGN www.nskshipdesign.com					Sheet no: 1 OF 1
3904-101-001_C					Replacement for: